

sneak peek...

# Glassware V5.0

Automated Pricing  
I.G. & Lami Configurators  
ANSI Barcoded Labels  
Pooled Inventory  
Costing & Real-Time Margins  
Automated Shipping Paperwork  
Accounting Bridges  
Optimization

COMING  
2009  
FIRST QUARTER

**Glassware V5.0 from Simplicity Computer Solutions** provides a clean and sleek looking interface to enhance productivity and make it easier to use with all the new features such as the brand new Advanced Scheduler and Advanced Enterprise Rack Solution.

## Wiki Document Management System

The Wiki Document Management System is a user managed knowledge base built into the main menu to act as a centralized digital library to store information that is available to all users. Users access and create wiki-documents such as policies and procedures, memos, announcements, newsletters and meetings. The Wiki system accommodates common forms of digital documentation such as AutoCad™ files, MS Word™, MS Excel™, PDFs, photographs and electronic scans of original paperwork. The system stores everything digitally, reducing the amount of paper a company consumes. Glassware is designed to share information, so the software simplifies the need to label and catalog digital documents. Such storage also allows the digital documents to be found and shared more easily.

## Procurement

Fully integrated with demand and order entry, Glassware's Procurement module eliminates double entry and can be bridged to any financial system.



Telephone: 905.683.7743  
Fax: 905.683.2064  
email: sales@simplicitycs.com

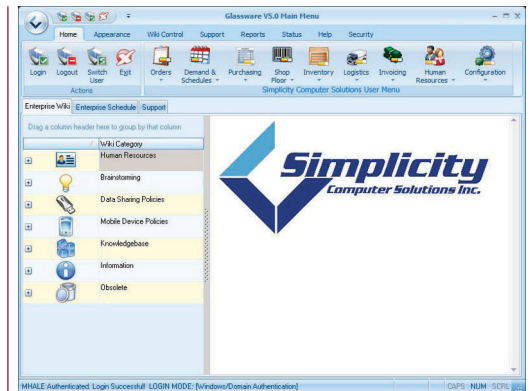
Visit our website for free downloads such as Simplicity's Energy Surcharge estimating tool!

[www.simplicitycs.com](http://www.simplicitycs.com)

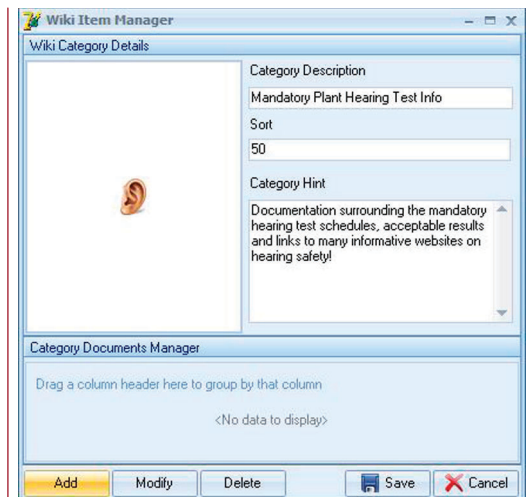


Simplicity Computer Solutions reserves the right to modify all products & specifications without notice. 0004B

GLASSWARE V5.0 MAIN MENU WINDOW



WIKI ITEM MANAGER WINDOW



PROCUREMENT WINDOW

