

you can see clearly now...

# Glassware V4.0

Automated Pricing  
I.G. & Lami Configurators  
ANSI Barcoded Labels  
Pooled Inventory  
Costing & Real-Time Margins  
Automated Shipping Paperwork  
Accounting Bridges  
Optimization

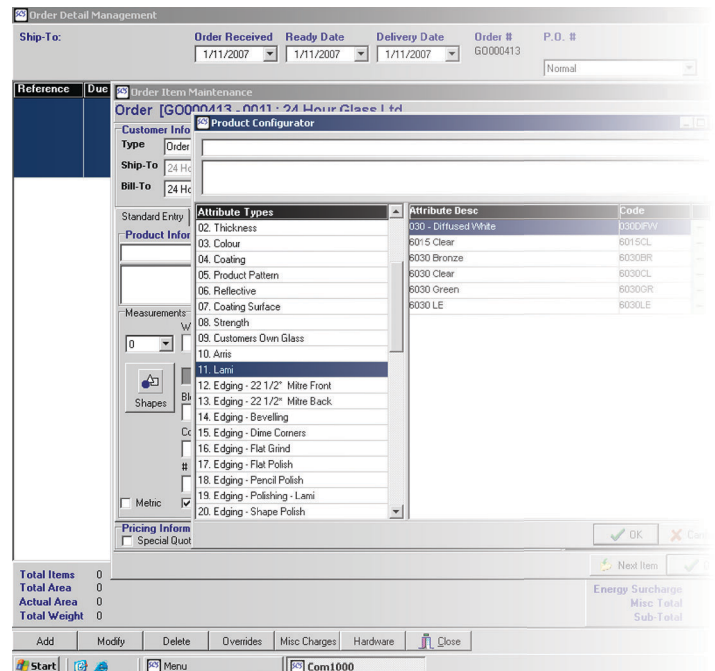


**Glassware V4.0 from Simplicity Computer Solutions** is a specialized end-to-end Enterprise Resource Planning (ERP) solution for the flat glass manufacturing & commercial glazing community, specifically glass fabricators, glass distributors and glazing contractors.

Glassware V4.0 is an industry proven, cost effective, highly configurable, yet simple-to-use glass-processing software system which is widely recognized as one of the industry's most powerful and comprehensive business management software packages.

User-friendly Glassware V4.0 is a completely scalable solution capable of running any size or type of operation from the largest tempering fabricators with multiple locations, to modest fabrication plants and start-up facilities. The modular design allows customers to purchase only those modules which they require to meet the needs of their operations.

Established in 1995, Canadian based Simplicity Computer Solutions understands the tremendous importance of providing the highest quality technical support to its customers and their employees. With a combined total of over 100 years of glass processing experience; Simplicity Computer Solutions knows the industry and speaks the language of glass. Celebrating more than 12 years of business, Glassware business management software can be found streamlining operations, increasing productivity and boosting profits in leading flat glass companies across North America.



**Isn't it about time you start seeing things more clearly?**

Contact Simplicity and arrange for your **FREE** live, interactive on-line demonstration!

Telephone: 905.683.7743 | Fax: 905.683.2064 | email: sales@simplicitycs.com

Visit our website for free downloads such as Simplicity's Energy Surcharge estimating tool!



Simplicity Computer Solutions reserves the right to modify all products & specifications without notice. 0001E

[www.simplicitycs.com](http://www.simplicitycs.com)

features

# Glassware V4.0



## Core System

Customer Management & Marketing Tool with mass email and faxing

Order Entry & Quotation/Estimate Management System

Automated Pricing System - Configurable Pricing Engine capable of handling any pricing model

Customer Job Tracker and Quote Replicator

Shipping/Logistics Management System

Invoicing System

Energy Surcharge - Handles any model - weight, SQFT, SQFT by thickness, % of sale etc

Tax Collection - Configurable to handle unlimited number of taxes, and tax models

Reporting System - Comes with 50 standard reports & custom adhoc reporting capability

## Order Entry & Quotation Add-On's

Insulated Glass (I.G.) Unit Configurator (unlimited layers)

Laminated (Lami) Glass Configurator (unlimited layers)

Export of transactions to popular Financial Packages (QuickBooks, AccPac, Simply Accounting & more)

A/R Aging Accounting interface

AutoCAD Integration - Attachment of AutoCAD files to work orders

Geometrical Shape Visualization (Support custom catalogues: Lisecc, PMC, A&W, Optyway & More!)

Label & Bar Code printing

EDI & Secure customer web based order entry

Optimization Bridge - Integration with cutting optimizers (A&W, PMC, Optyway, Perfect Cut + Others)

Digital Order Confirmation

Pre-Payment Management

## Logistics

Shop Floor Data Collection "Lite" (Included in Production Shop Floor Data Collection)

Shipping/Logistics Management

RF Load Staging

Load tender, email notification

Macro Rack Management

## Purchasing

Purchasing System

Order/Quote Management

Glass Inventory and Receipt Management

## Production Scheduling

A/P Aging Accounting Interface (QuickBooks, AccPac, Simply Accounting & Custom)

Fully integrated with order entry (i.e. Auto-purchasing Demand)

Label printing with barcodes by schedule

Rack tracking

Harp rack organization

Advanced Scheduling with capacity planning

Multi-plant Replicator and Viewer

Capacity Based Due Date Suggestor

## Production Management

Shop Floor Data Collection

Enhanced Shop Floor Production Tracking (RF & RFID)

Work Order / Label Tracking

Integration with various CNC equipment

Specification sheet system

## Inventory Management

Inventory System serialized or pooled

Inventory Management Transaction Suite

Raw, WIP & Finished Goods inventory viewing

## Glazing

Virtual Job Folder, Job Tracking, Budgets, Progress Billing & More!

For more information about the Features of Glassware V4.0, contact one of our sales team members at 905.683.7743 or email us at [sales@simplicitycs.com](mailto:sales@simplicitycs.com)



[www.simplicitycs.com](http://www.simplicitycs.com)



screenshots &  
sample label

# Glassware v4.0

*Simplicity has a reputation for its positive technical service. The company's annual maintenance package is all-inclusive which includes telephone and email technical support (usually same day) and version upgrades. This means you never need to repurchase the software. Simplicity has worked hard to build its' Technical Support team, constantly seeking continuous improvements to the company's services and its day-to-day user support.*

*"We were looking to automate and the software really has done what we were expecting it to do. We have had the most dramatic effect with throughput through the plant. Ever since we've put it in, we've been operating at a breakneck growth pace. Simplicity has helped us by giving us the extra capacity. We spoke the same language, they are familiar with the fabrication and characteristics of glass. They aren't trying to take some generic software package and adapt it to work with glass. Our growth wouldn't have been possible without the change."*

**Chris Mammen**  
President of Irving,  
Texas based M3 Glass Technologies  
and Mammen Glass and Mirror  
[www.m3glass.com](http://www.m3glass.com)



[www.simplicitycs.com](http://www.simplicitycs.com)

**Simplicity Computer Solutions**  
[www.SimplicityCS.com](http://www.SimplicityCS.com)

Delivery Date: 06/24/2008 Route Code: **APFFT**

Route #: **North** W.O. # **GW006594 - 001**  
Customer: **ABC GLAZING COMPANY**  
P.O. #: **00569 RP**

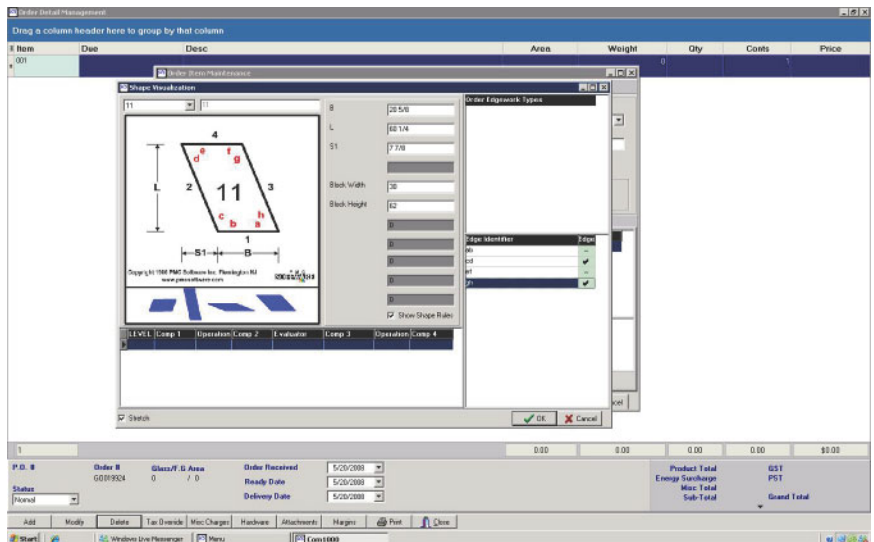
Shape # 002      3/8" ø CLEAR ø Cut Size ø Shower  
Door ø Temp ø WITH Logo ø Flat  
Hi-Polish - All ø Hinge Cut-out x 02 ø  
Hole 0" to 2" x 02



W: 30 H: 70 H1: 68

Job I.D.:   
Jones House, 3rd floor, Master bath 1 of 1

generated label with all pertinent info



The screenshot shows a software window titled "Shape Visualization" with a technical drawing of a trapezoidal glass shape. The drawing includes dimensions L, B, S1, and B1, and is labeled with "11". To the right of the drawing are various configuration options, including "Block Width", "Block Height", and "Order Edgework Types". The interface also shows a table with columns for "Item", "Desc", "Area", "Weight", "Qty", "Costs", and "Price". At the bottom, there is a status bar with fields for "Order #", "Glass/F/G Area", "Order Received", "Ready Date", "Delivery Date", "Product Total", "Energy Surcharge", "Misc. Total", "Sub-Total", and "Grand Total".

actual screenshot of Shape Visualization component

# system requirements

centralized deployment

# Glassware V4.0



System Requirement Component	5 Users				
	Server	Client			
Recommended Processor	2.4GHz Xeon/64Bit	Capable of running Windows XP with a Terminal Service RDP CAL			
Recommended Operating System	Windows 2003				
Memory - RAM	2Gb				
Hard Drive	100Gb				
Floppy Drive	Optional				
Network Adapter	100MBit				
CD/DVD Drive	Standard				
Hard Drive Configuration	Optional - RAID				
Power Supply	Redundant				
Database Server Software	Microsoft SQL or SQL Express				
		6-10 Users		11-25 Users	
	Server	Client	Server	Client	
Recommended Processor	2.4GHz Xeon/64Bit	Capable of running Windows XP with a Terminal Service RDP CAL	Dual 2.4 Xeon	Capable of running Windows XP with a Terminal Service RDP CAL	
Recommended Operating System	Windows 2003		Windows 2003		
Memory - RAM	2Gb		4Gb		
Hard Drive	100Gb		140Gb		
Floppy Drive	Optional		Optional		
Network Adapter	100MBit		100Mbit		
CD/DVD Drive	Standard		Standard		
Hard Drive Configuration	Optional - RAID		RAID Configuration		
Power Supply	Redundant		Redundant		
Database Server Software	Microsoft SQL or SQL Express		Microsoft SQL or SQL Express		
		26-50 Users		50+ Users	
	Server	Client	Server	Client	
Recommended Processor	Dual/Quad 3.0 Xeon	Capable of running Windows XP with a Terminal Service RDP CAL	Quad 3.0 Xeon	Capable of running Windows XP with a Terminal Service RDP CAL	
Recommended Operating System	Windows 2003		Windows 2003 Enterprise or 64 Bit (or newer)		
Memory - RAM	4Gb		8Gb		
Hard Drive	140Gb		200Gb		
Floppy Drive	Optional		Optional		
Network Adapter	100Mbit		100Mbit/Gigabit		
CD/DVD Drive	Standard		Standard		
Hard Drive Configuration	RAID Configuration		RAID Configuration		
Power Supply	Redundant		Redundant		
Database Server	Microsoft SQL Spec		Microsoft SQL Spec		
Database Server Software	Microsoft SQL or SQL Express	Microsoft SQL or SQL Express			



For more information about the System Requirements for Glassware V4.0, contact one of our sales team members at 905.683.7743 or email us at [sales@simplicitycs.com](mailto:sales@simplicitycs.com)

[www.simplicitycs.com](http://www.simplicitycs.com)